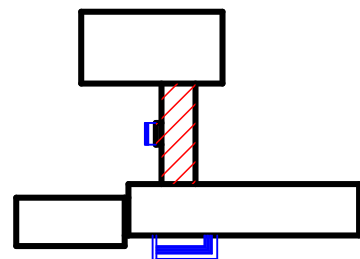


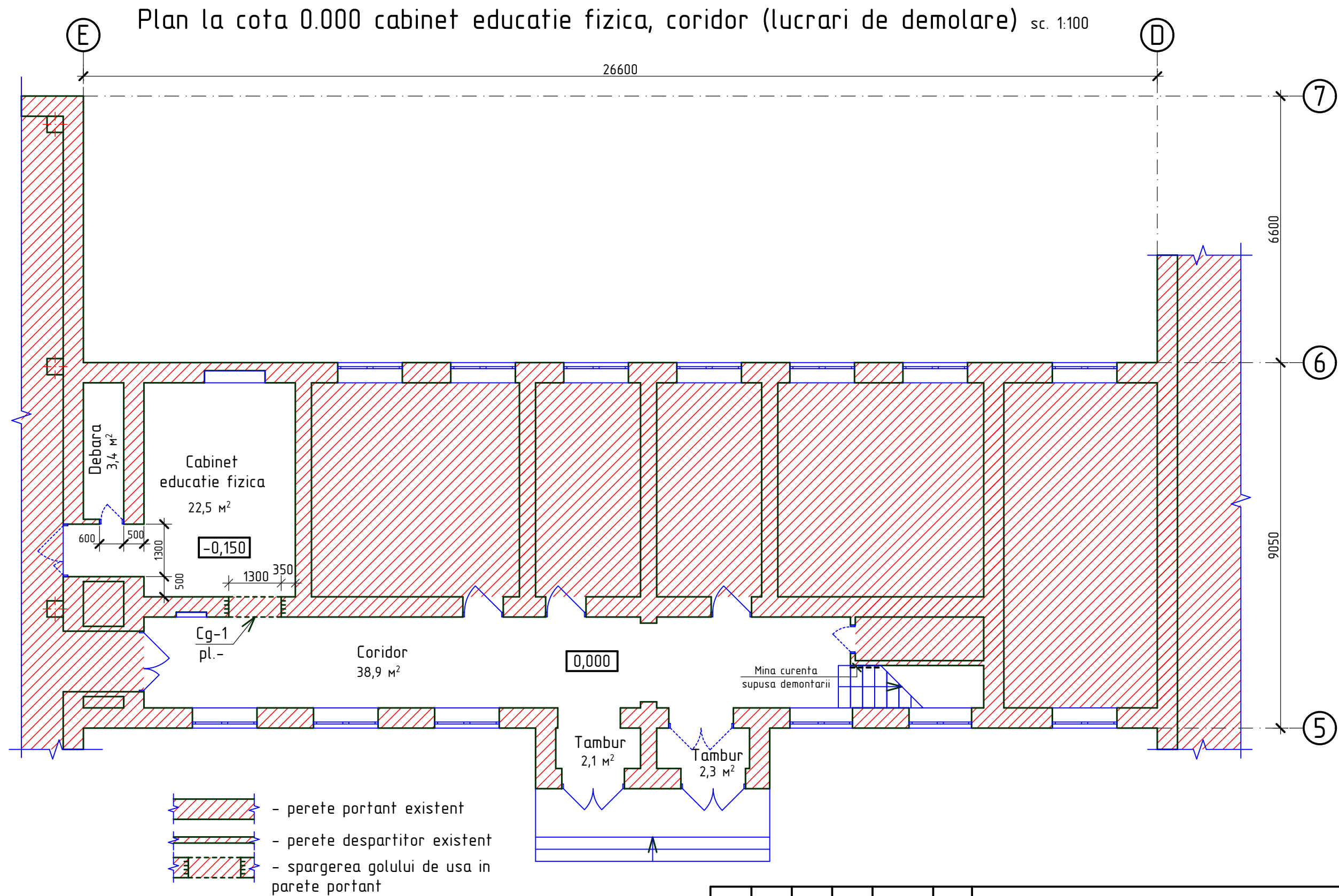
Nr.inve.a.orig. Data si semnatura Nr.inve.schim.

## Schema cladirei



### Nota:

1. Lucrarile de demolare vor fi efectuate in conformitate cu NCM A.08.02:2014 "Securitatea si sanatatea muncii in constructii".



						OBIECTIV NR. - 14.05-D/19-SAC			
						Reparatia capitala a unor incaperi in Liceul Teoretiv "Mihai Eminescu" din str. Stefan cel Mare si Sfint nr.81, mun. Balti			
Mod.	Can.	Foaia	Nr.d.	Semnat.	Data	Reparatie capitala	faza	plansa	planse
ASP		Postolachi			06.19		PE	5	
ISP		Hihlat E.			06.19	Plan la cota 0.000 cabinet educatie fizica, coridor (lucrari de demolare).	SRL "GEO-CAD-PROIECT" mun. Balti		
Elaborat		Ciobanu V.			06.19				